

CHILDREN AT PLAY

COPYRIGHT

(C)

2015

BY

W C VETSCH

ALL RIGHTS RESERVED

YOU ARE HERE

UNMODIFIED SPACE [ANAMI]

UNMODIFIED SPACE [ANAMI]



SPIRITUAL



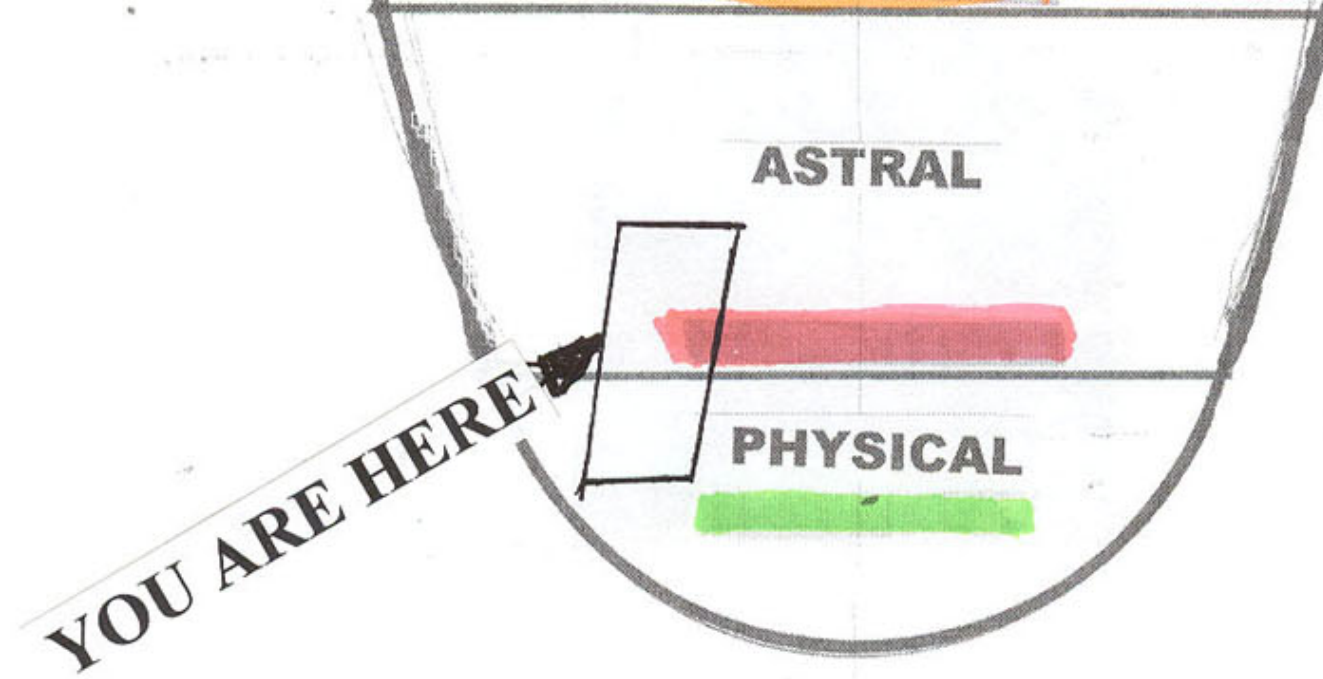
ETHERIC

MENTAL

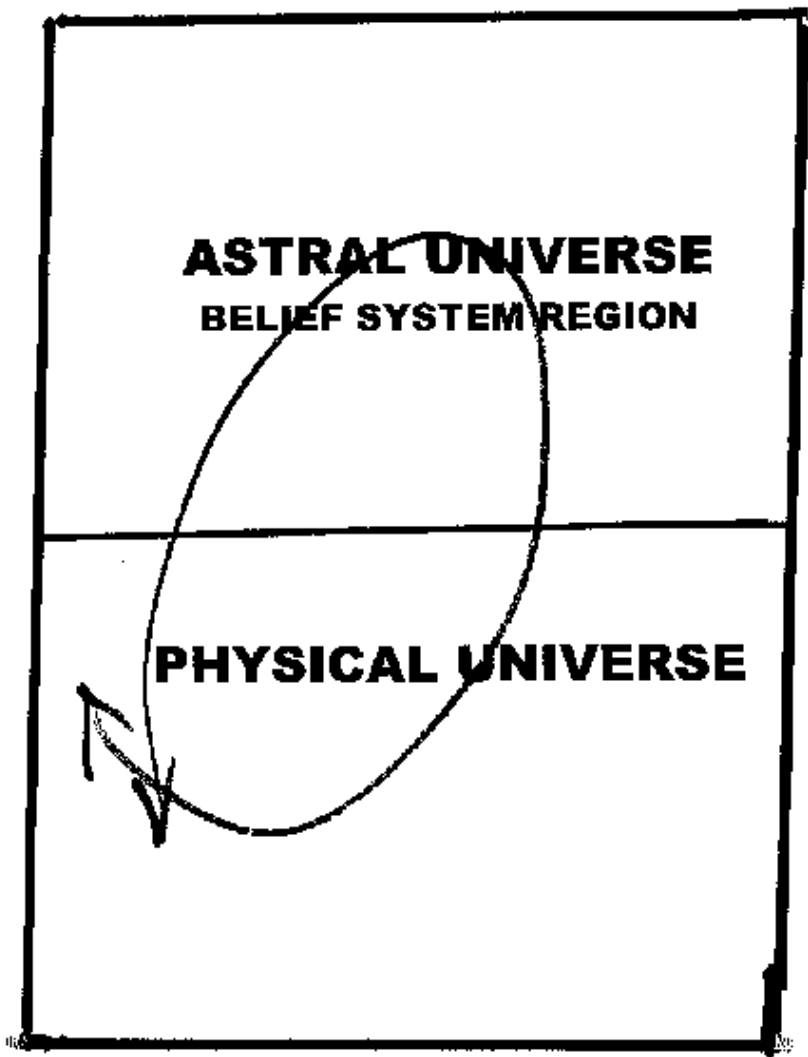


CAUSAL





AND, you may have been here for a million years or so.



This is a more detailed view of the "You Are Here" box in the main diagram above. You have been going around in circles - from lifetime to lifetime - essentially forever. This is your childhood as a young Soul. However, eventually, childhood must end. There are many other adventures beyond childhood and we wish here to explain some of the basics of your situation and your potential future which will hopefully save you some time.

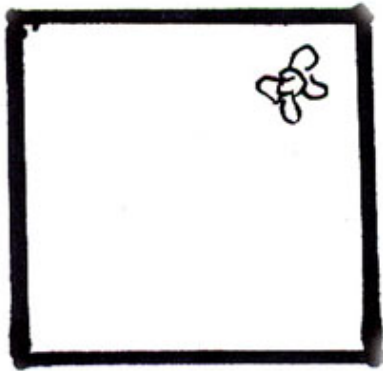
The classic song, "The Highwayman", performed by Johnny Cash and others is a good illustration of your situation and how you will return "again, again and again".

ASTRAL STRUCTURES

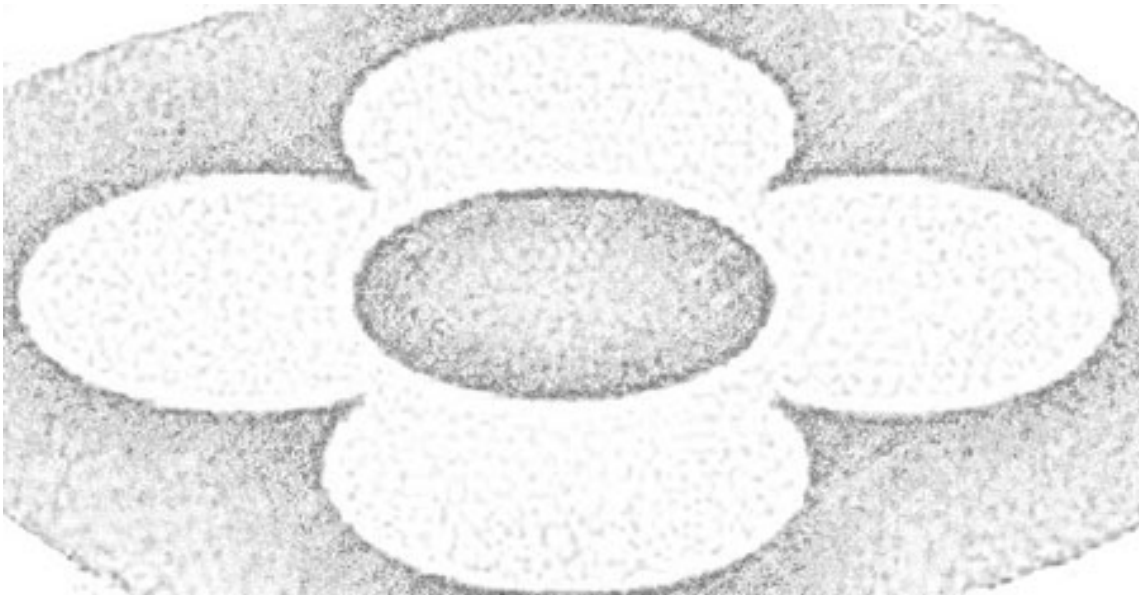
From the outside, the Astral planes appear to be flat "pallets" neatly spaced apart and suspended in space. Travelers report identifying seven planes. The planes have some thickness.



When viewed from the top, each plane is square.



The planes are marked for identification with a schematic picture representing a lotus flower.



The number of petals of the lotus identifies the plane. Additionally, there are other markings apparently designed for navigation. The system of planes appear to have been deliberately designed to be user friendly for those who know how to navigate these worlds. It is impossible to argue that all this is some kind of "random chance accident". Clearly, some intelligence designed them.

The chart [1] below shows the lotus code. This chart is copied from our technical book "TEXT" released in 1992. This is how you determine your location in the "inner worlds".

SET #	MAYA	KAL	MAHA KAL	# of PETALS [of the LOTUS]
1	Guda	Antash Karan	Trikuti	4
2	Indri	Below Third Eye	Lower Part of Daswan Duar	6
3	Nabhi	Third Eye	Upper Part of Daswan Duar	8
4	Hriday	Sahans Dal Kanwal	Shaj Dip	12
5	Kanth	Set Sunna [Upper part of Astral Plane]	Top of Maha Sunna	16
6	Behind the Eyes	Trikuti [Lower part]	Bhanwar Gufa	2

Because you are a "traveler" and have a living physical body you have the right of return. However, this may not be true for the residents (entities, whatever you wish to call them) who call these planes home.

As a traveler, once you "pierce the surface" of any Astral plane, you will find yourself in what appears to be a three dimensional world similar to our physical world. The key identifications are that the sky in the Astral worlds is pink - as opposed to blue on Earth - and you will probably hear distant sounds of a bell and/or a conch. Travelers report that looking for the source of these sounds is futile. You will never find it.

The "natives" will be interacting in social structures - families, villages, etc. - similar to Earth. You can interact with them because you are now on the same "frequency" since you are using your Astral body. When you decide to return to the Physical universe and your physical body, from the perspective of an Astral entity, you will simply "disappear".

Having viewed this, it should not take a great "leap of faith" to realize that the apparent three dimensional world you live in here on Earth is an illusion of perception and is, in reality, a flat plane in the Physical universe. Physical bodies require a narrow band of environmental parameters to exist. However, given the appropriate protection, such as a legitimate spacecraft, it would be a simple task to "pierce the skin" of the Physical universe, move quickly on the outside to any desired location and then "drop back in" at your destination. From the perspective of beings inside the Physical universe, your craft would seem to just "appear" and then "disappear" when you departed.

To view a short (5 minute) animation illustrating the idea of dimensions, search You Tube using the title "Dr. Quantum - Flatland".

THE CHRISTIAN BIBLE IS ONLY ASTRAL

The Christian Bible begins at the point where the Physical and Astral Universes are regenerated following a previous minor dissolution and ends (Revelations) with a prediction of the next dissolution and subsequent regeneration of the two lower planes.

Briefly, the sequence is:

The Astral and Physical Universes do not exist. The Causal Universe exists but the power crystals are dormant. Only the background matrix (dark energy) exists. So the "Spirit of God" (in this case the Lord of the Causal Plane) moves over the waters (dark energy field) and then the command to reenergize the power crystals, "Let there be light" is given. The power crystals are activated and the Physical and Astral Universes once again return to active existence. The cycle of Ages begins. The Bible ends in Revelations with the statement (psychic vision), "I saw a new Heaven and a new Earth because the old Heaven and Earth had passed away". So this is a prediction of the coming dissolution and the subsequent recreation of the Physical and Astral Universes. So, clearly, they are calling the Astral Universe "Heaven". Unfortunately, this is what most people believe but it is not correct and to believe this is a serious mistake. You can see on the "You Are Here" chart where you are and where the Spiritual planes are. The Spiritual planes are imperishable regions. They do not "pass away". That is why Souls try to get there. What good is a "Heaven" that periodically "passes away".

What About Jesus

Remember that the Christian Bible was assembled long after Jesus had died. Various pieces of hearsay evidence were assembled, censored and sanitized by a committee to prepare this text. There are essentially no legitimate Spiritual instructions in this book. Those that are present, such as the reference to the third eye in the statement, "If thy eye be single...", are apparently oversights by translators who had no idea what this actually meant.

The picture painted of Jesus appears to have no relationship to reality. Serious researchers have developed what appears to be a realistic profile. The key points are: Jesus was a normal man. He liked women. He was married and fathered children. His dependents are alive today according to DNA evidence. Jesus likely studied under Indian Spiritual Masters. He had access to significant wealth because of his relationship with a man who held the monopoly - under orders from Rome - over all metals trade. His benefactor operated a network of ships and possessed classified maps of the world unknown to others at that time. The ships could have visited North America before others knew it existed. Jesus was able to go anywhere these ships went. There is dispute among Indian mystics as to whether or not Jesus achieved a legitimate SM-1 (Spiritual Master) rating, however the unusual events which occurred after he was killed suggest that he had achieved SM-1.

What Jesus actually taught - and what apparently got him killed - was that men and women were equal. He also emphasized that Spiritual development was to be achieved *through a person's individual effort*. Additionally, he was not fond of money manipulation which was used to enslave people in his time as it is today.

If you are interested in this area of knowledge, some search terms you can use on the internet are "Jesus fathered children" and "Jesus father Roman metals".

THE ASTRAL DECEPTION

You need to understand the attributes of the Astral universe. There are legitimate Astral Masters - living people who can navigate the Astral planes and who are competent to teach others - who have no idea what the Causal plane looks like or even that it exists at all. This appears to be because they have accepted the Astral planes as "Heaven" and have no knowledge about any of the planes above it. This serious mistake also appears to have been made by most of the world's mainstream religions.

Just as accepting that all you are is a physical body limits you to the Physical plane, believing that you are your Astral body limits you to the Astral plane which likely explains why Astral travelers never see the Causal plane. Actually, of course, you are not any of these "bodies". You are a Soul. As a Soul, you have no limits. The various "bodies" are simply vehicles that allow you to interface with the inhabitants of a specific plane.

Any Astral plane has more "capacity" than our Physical plane. Essentially all physical structures we create on Earth have an exact duplicate on one of the Astral planes. Because the Astral universe uses a "finer" grade of matter, these duplicates appear new, beautiful and shiny. Consequently, Vatican City, for example is exactly duplicated on an Astral plane most

likely in the Catholic zone of the "belief system territories". All world religions have a corresponding zone in the Astral belief system area. They are at the same level vertically but are compartmentalized horizontally so that the different inhabitants never meet.

Consequently, Catholics, for example, who die and find themselves in the Catholic belief system region complete with the Vatican and "gold" streets or whatever, sincerely believe they made it to "Heaven" and, since they cannot see the other religion's zones, assume that everyone else must have "burned up in hell". It is a great deception. Because they believe they have reached their final destination, they make no further effort to advance Spiritually. Therefore, when they run out of "good karma credits", they learn they must reincarnate for another physical lifetime on Earth. Of course, once in a new physical body, they forget all this and so continue to repeat the same mistake over and over and over again.

NEEDS OF SOULS TAKE PRIORITY

The Creation exists for only one purpose. That purpose is to provide a safe environment for "baby" Souls to develop. Until a Soul becomes an adult or young adult, it cannot function in the pure Spiritual worlds. Therefore, the egg like structure you see in the overview diagram above is created. It provides various levels of artificially reduced vibratory states so that young Souls can have activities suited to their energy levels. In the Physical universe, bodies and lifetime attributes provide each Soul with what it needs to progress at that time.

Having said that, let's look at an example: Some psychics became curious as to why some Souls would choose severely disabled bodies. They checked the past life records of a "vegi kid" who couldn't do much of anything but was born to parents who, nevertheless, loved the helpless child and took care of him. The records showed that, in past lives, this Soul had been a powerful leader. He commanded respect and people feared him. However, with all his power and wealth, no one truly loved him. Now, totally helpless, he was receiving the one thing he had never known in all his past lives - unconditional love. This was quite possibly the last physical lifetime for this Soul since he had experienced everything else.

LIMITATIONS OF MASTERS

Spiritual masters exist. Legitimate Spiritual masters on the physical plane hold the rating SM-1. Ascended Spiritual masters who teach on the Astral planes hold the rating SM-0. In our present world 99+% of of people claiming to be Spiritual masters are fakes. Additionally, since legitimate Spiritual masters are not concerned with wealth or publicity, they are practically impossible to find. You have a better chance of finding an ascended master. However, you would first need to master Astral travel. These ascended masters teach classes on the higher Astral planes. If they recognize you as a serious student, they might let you sit in even though you still have a living physical body.

Legitimate masters can be of great benefit because they can do analysis of your present Spiritual situation and therefore recommend some course of action that will cause you to Spiritually advance. However, they cannot just "zap" you into some high state of enlightenment for which you are not prepared. If it were that simple, there would be no need for the Creation with all of its various levels. Souls could just come into existence as completely developed adults. There is no question, however, that your Spiritual progress would be greatly accelerated if you had the benefit of a legitimate master.

BLACK MAGICIANS

Black magicians are developed Souls who choose to challenge God. They believe that they have mastered enough knowledge of the mechanics of the Creation that they can do as they please and no force can stop them. Black magicians are responsible for the miserable existence most of the Souls on Earth are compelled to endure.

Sometimes it is not easy for the uninitiated to tell the difference between black magicians and the legitimate administrators who maintain the creation. The difference - which can be difficult to verify for those with limited knowledge of the Creation - is that the situations engineered by the legitimate administrators are designed to promote positive Spiritual development even though they may appear difficult and challenging.

Black magicians create situations which benefit themselves by enslaving less developed innocent Souls and holding them prisoner. They have no intention of ever letting any Soul they capture escape. Spiritual development for the captured Souls becomes impossible.

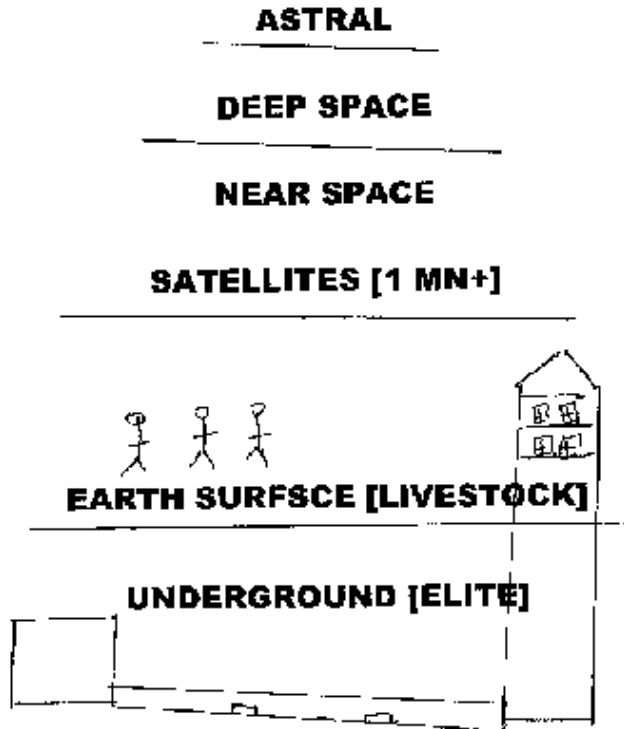
Black magicians cannot thrive everywhere. Any advanced society (planet) would recognize them and turn them in to IGP (the intergalactic police). To avoid recognition, they must stay in the shadows. They prefer planets where the natives are ignorant of their existence. They appear to have found a happy home here on Earth. This is why everything is "secret" and you

have a "shadow" government and "black" projects. They avoid the light. Exposure generally means death for them. Secrecy is their cloak of protection. "National security" has nothing to do with the nation or the general population. It is, rather, to protect these "people" from discovery.

Black magicians generally cannot be rehabilitated. When apprehended, they face the most severe penalty allowed under the Universal Laws which is banishment from the Creation.

ABERRATED SYSTEMS

Aberrated systems are social structures which operate contrary to established universal laws. Earth is an example of an aberrated system. Below is a schematic model of this system:



In this model, the innocent people who live on the surface of the planet have been devolved to the level of "livestock" and enslaved by a group of black magicians who operate in the shadows [shadow government] and who are mainly based underground in secret cities and installations. The various underground units are interconnected by tunnels which support a network of high speed "mag lift" trains. Innocent looking buildings on the surface have levels underground which connect to the high speed underground transport network. The surface population is constantly monitored by a network of over one million satellites, most of which are used for nefarious purposes. Although the surface slaves are aware of some near space activities, they remain totally unaware of the secret deep space programs which involve colonies on the moon, Mars, suitable planets in other solar systems and activities beyond the physical universe in the adjacent Astral planes.

Some science fiction writers who were clearly far ahead of their time have painted a pretty clear picture of present day Earth in their books and movies. Here are some examples:

GEORGE ORWELL: Animal Farm

This book uses a group of animals to illustrate how a society which is able to throw off the yoke of slavery quickly degenerates into a new totalitarian society and is a good model for the degeneration of the United States. The animals originally post a "bill of rights" which includes the statement "All animals are equal". Similarly the US founding fathers proclaimed "All men are created equal". However, one day the animals noticed this had been changed to read, "All animals are equal but some animals are more equal than others". Although no one has dared to actually erase the US founding father's documents, today we have introduced new concepts like "too big to fail" and "too rich/important to jail".

GEORGE ORWELL: 1984

This book is almost an exact model of our current society. The world stays in perpetual war. Governments bomb their own people [example: 9/11] and then blame it on some "enemy". Government agencies do the opposite of their title. For example, the "Ministry of Peace" makes war. In our world, by comparison, the Centers for Disease Control (CDC) create deadly diseases like AIDS and modified Ebola and keep legitimate cures for things like cancer hidden and classified. The Department of Defense attacks simple, innocent people [example: Viet Nam] who pose no threat. "Thought Police" can arrest you for illegal thoughts [watch out what you say on Twitter and Facebook].

HUXLEY: Brave New World

In this "new world", people are manufactured so as to have various levels of intelligence. The society is managed by "regular people" [the Alpha Class] who have not been deliberately been degraded. Today we do the same thing with information control. The government claims the right to "own the truth" and you need permission - in the form of a security clearance - to know the truth. Leaders are allowed to know everything, just like the Alpha Class in the novel. However, everyone else is restricted to limited knowledge in specific "compartments" [SCI].

MOVIE: They Live [Director: John Carpenter]

This movie has more truth than may first meet the eye. Although it is heavy on violence, it accurately describes components of today's world. In the movie, the ruling class is based underground (same as today). There are secret relationships with aliens (same as today). The key to discovery is special glasses. If you have them, you can see the truth. The general population is clueless.

These "special glasses" are much closer to the truth than you might think. Over 100 years ago, Walter Kilner used Dicyanin dye to visualize the Astral frequency band and observe the human Aura. Later, glasses were developed which worked as well as the Dicyanin filters. After the end of World War II, the National Security Agency [NSA] was set up and one of the first things it did was to find information which was already in the public domain which it felt should be removed from public knowledge and classified. That was the end of easy access to Dicyanin and the glasses "disappeared". When you can find Dicyanin listed in a chemical catalog, the description given is: "use for the visualization of magnetic fields". Bet you never knew you could actually see "invisible" magnetic fields.

If you had these glasses today - and you can bet government agents have them - you would see things that the powers to be never intend for you to know. Not everyone you see walking the streets is from this planet. Although they may be able to physically resemble humans, they cannot change their Astral signature and so they would stand out if you had the glasses. People who have surgically changed their sex would be obvious because males and females have opposite "spin" in their Astral structure and this cannot be changed. Also, there are natural creatures that live among us that exist slightly out of our range of vision and you would start to see them.

Walter Kilner's book is out of print but copies exist if you look for them:

THE HUMAN AURA

By WALTER J. KILNER

B.A., M.B. (Camb.), M.R.C.P., etc.
Late Electrician to St. Thomas's Hospital, London

WITH 64 ILLUSTRATIONS

FOREWORD BY LESLIE SHEPARD

UNIVERSITY BOOKS  New Hyde Park, New York

H.G. WELLS - BOOK/MOVIE: The Time Machine

It may not be immediately obvious how accurately this movie describes the current world. It also proposes a solution to free humanity from the grip of the black magicians.

In the movie, the time traveler arrives at a future Earth where the people on the surface - although human - have devolved to a primitive state. A girl is drowning but no one seems to notice. The thought that they could save her simply does not occur to them. Underground, there are another group of humans who are relatively advanced and have technology. They

use the surface people for food, experiments and breeding. The hero [time traveler] teaches the surface people that they do not have to tolerate this. He teaches them to destroy the underground people and so sets the innocent surface people on a path to freedom and self reliance.

You may never realize how close this scenario is to your present world. Your surface world is controlled by the shadow people who live underground. They don't eat you, but some of their alien friends [e.g. Raptors] do. So, if you were entertaining some of these "people", it would be only polite to offer them a tasty human snack which you could discretely snatch from the surface. However, surface people are taken underground for use in experiments such as those reported in the secret underground genetics lab in Dulce, NM. Also, they freely abduct people for special projects like MKULTRA and MONARCH. Another popular use of the surface people is for spare parts - hearts, kidneys, livers etc. - to service the needs of the elite. Innocent people are also routinely used as human sacrifices in black magic rituals conducted by the government elite.

KARMA

Karma is the term we use for the system of cause and effect that determines destiny for Souls mainly in Physical and Astral universes. Although there are ways to erase karma for Souls capable of reaching the higher planes of the Creation, for those Souls unable to leave the two lower universes, karma is absolute.

Akashic Records

On the Astral planes there is a natural record keeping system built into the Creation which records everything. This includes all the thoughts, actions, past lives, etc. of every Soul. These records are absolutely accurate and cannot be altered or erased. People taken for judgment - either at the Galactic Court in the Physical universe or by the Lords of Karma in the Astral universe - are judged by these records. No one escapes justice in this system. As the Persian poet, Omar Khayyám, stated years ago:

The Moving Finger writes; and, having writ,
Moves on: nor all thy Piety nor Wit,
Shall lure it back to cancel half a Line,
Nor all thy Tears wash out a Word of it.

Example

Karma continues across time and lifetimes. For example, say you are a man and you kill another man but are never caught. You continue to live out a full life. However, in your next life, the girl you marry is the man you killed in the previous life now in a female body. She kills you but your death is ruled accidental or whatever so she inherits all your stuff and lives out a full life. This completes this cycle of karma. The slate is now clean.

Penalties

Although hell does not exist, there are unpleasant places and penalties you would be wise to avoid. Probably the two most serious are the banishment penalty for black magicians and the penalty for suicide.

Banishment means expulsion from the Creation. Since black magicians have challenged God - claiming that they are gods and people should therefore worship them - they forfeit the right to exist inside of God's Creation.

Suicides face the penalty of "perpetual isolation". People who commit suicide are taken to essentially a cell on the Astral plane and left there totally alone with no contact with any other entity. This can last hundreds or thousands of years or more. It is a terrible existence and if people knew the penalty that awaited them they would never do this. Unfortunately, they do not know and, due to the prevalence of the philosophy of scientific atheism, they believe that they are simply an "accident" with no past and no future existence beyond physical death. Lately, governments have started to promote suicide as the solution to life's problems. This is about as irresponsible as it gets. Even with the severe penalty, which is designed to impress upon the Soul that it made a serious mistake, there is a high recidivism rate among suicides when they are once again sent into a physical lifetime. This has become a real problem for the Administrators on the Astral planes and, it appears, there is no easy solution.

If you can visit the Astral planes and you know someone who committed suicide, go visit them and you can confirm this. You will find that they desperately want to communicate with

you but dare not because to do so will increase their penalty. They are about as miserable as you can get.

ADAPTATION METHODS

People have, over the years, developed and adopted methods to deal with the issue of physical death. Some main techniques are:

Don't Die

This is the method adopted by the global elite of black magicians. Currently, they use a time regression device which returns them to the age of a young adult. Reportedly, they got the device in a deal with aliens. Now that they have it, they feel content that they are invincible (exceptional). Based mainly underground in the secret world they have been methodically constructing for over one hundred years, these people - whom we refer to as the "negative core" - control the Earth and use the general population as their slaves. They intend to hold their slaves (Souls) prisoners forever as they feel that no force can stand against them.

Preselect Future Life

This technique is popular among some Pagan groups. Having accepted that reincarnation is inevitable (it is not) they seek the best "deal" they can get by looking into the future for parents who will provide them with a comfortable life if they can arrange to be born as their child.

Preselect Astral Destination

This is the technique used by the mainstream religions. These groups have a zone in the belief system region of the lower Astral planes. Techniques such as baptism and initiation create invisible links between the Soul and the specific belief system area that religion uses. The person is unaware that this is what is really being done in these rituals and ceremonies. When they die, they are drawn to this Astral location and generally believe that they are in "heaven". In the next lifetime, because of positive reinforcement, they are likely to be attracted to the same religion.

Buddhist Technique for Lamas

Lamas are trained to select a Buddhist family when it is time to begin a new physical life. These families are trained to look for signs that their child may be a reincarnated Lama. The monastery has saved some favorite items of the "dead" Lama. These are mixed with meaningless things and placed before the young child. If the child chooses an item which belonged to the Lama he is presumed to be the reincarnation of the deceased Lama and further tests are then scheduled. This classic scenario has been made into a major motion picture and the fact that this process is used is not secret. The obvious question is: "Since Souls who reach the Spiritual planes do not need to reincarnate, exactly what is the true Spiritual status of these Lamas".

ACCEPTING REALITY

Earth inhabitants, at least in recent history, seem to have a problem accepting reality. Even when reality is "in their face" they pretend not to notice it. First, the Earth was flat. Then it was round but was the center of the universe. Later, no, it was just another planet circling our sun *but* clearly there could not be any life superior to us anywhere in the universe. That's the accepted position today for most people. Obviously, the general population are slow learners - to be polite.

Some people cannot see colors. But, we know colors exist because others can see them. So, in order not to "upset" those who cannot see colors, should the rest of us agree to pretend that colors do not exist. Well, we don't do that. We honestly explain that vivid colors do exist but some just cannot see them. Unfortunately, society takes the opposite approach when faced with Astral vision, clairvoyance, clairaudience and the like. These things are reality for many people, however, mainstream society chooses to claim they do not exist in order not to "upset" the majority. Why is it so hard to just "come clean" and admit that these things do exist but, like colors, some cannot see them.

Science, which is supposedly methodical and honest, does an about face when confronted with evidence which shows that their model of reality is lacking. Whenever proof that is hard to

ignore is presented, they simply ignore it anyway and then try to suppress it. First, there was dicyanin. Solution: make it unavailable and pretend it was never there. Then came Kirlian photography which is still used but has been "erased" from mainstream media sources. This technique takes a hard photograph of the Astral spectrum - you know, the spectrum that the powers that be don't want you to know exists. Since this type of evidence is impossible to ignore, the response has been to call it an "unexplainable phenomenon" and refuse to discuss it.

It would really be to the advantage of the general population if its leaders would stop lying, and admit the truth because there is no question that they definitely know the truth.

BEYOND CHILDHOOD

There are lots of experiences awaiting you beyond childhood. You will get to them eventually. However, how long this will take is really up to you.

You should be aware that you are in the last cycle of ages. At the end of this cycle, the Physical and Astral universes will go into dissolution. Nothing will exist here. The Causal plane will be the closest active plane. Unless you have sufficient Spiritual energy to exist at the Causal level, you will go into suspense and will have to wait until the two lower universes are regenerated. Since the "down time" is equal to the "up time", this will be a long wait. In the meantime, the Souls who "graduated" and moved up to the Causal level will have completed their experiences in the created worlds and moved on to the Spiritual worlds which are beyond dissolution.

The black magicians who have so far evaded capture will have been apprehended and sent for banishment. Black magicians believe they are "all powerful" because they have mastered knowledge of matter, energy, space and time (MEST). However, matter, energy, space and time no longer exist so none of their clever tricks are available to them. Now, essentially "naked", they are easily located and captured.

The Souls waiting in suspense are the innocent Souls that were just not ready to move up. They will populate the "new Earth" which will begin, as always, with the Golden Age. This is the age of innocence where evil has not yet entered the consciousness. This is the meaning of "The meek shall inherit the Earth".

REFERENCES AND CREDITS

[1] Credit for chart: L.R. Puri (deceased) Professor of Metaphysics, India

Other books on this site by the same author which provide background information for this book are:

ESSENTIALS OF MYSTICISM
TOP SECRET MEDICINE
SEARCHING FOR SECRETS
TEXT